

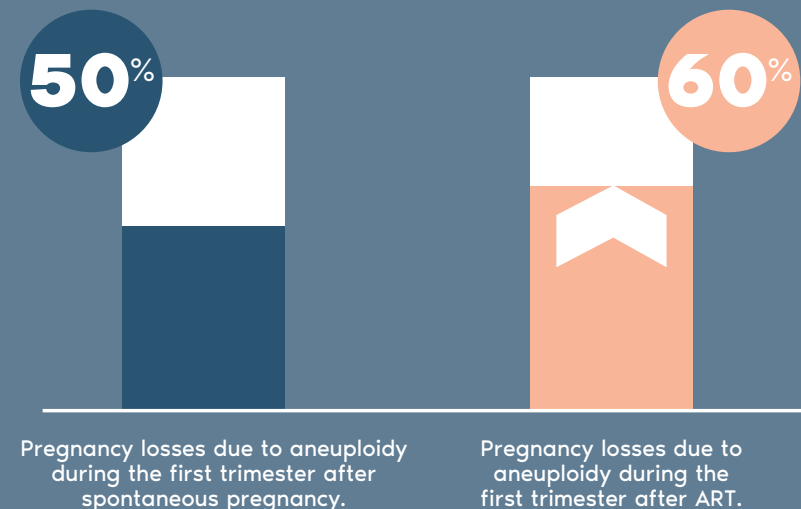
niPOC is an advanced non-invasive test which uses a blood test to determine whether a pregnancy loss was caused by a chromosome abnormality.

Igenomix is the only laboratory in Spain which offers this test scientifically validated by its own case studies.

- The 24 chromosomes are analysed to pinpoint the reason for the pregnancy loss.
- A simple blood test provides the information a patient needs for suitable recommendations on future pregnancies.

50% of pregnancy losses in the first trimester are caused by chromosomal anomalies.

This statistic is higher than 60% among women who have received assisted reproductive treatment.



Martinez et al., 2010; Campos-Galindo, et al. J Assist Reprod Genet, 2015.

Why niPOC?



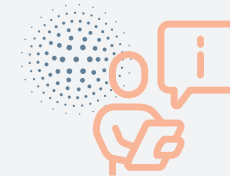
NON-INVASIVE

No surgical procedure necessary to obtain miscarriage tissue. Results obtained with just **a simple blood test**.



FAST

Results available within 7 working days, compared to 1 month with conventional tests.



MORE INFORMATIVE

Results in more than 85% of cases, compared to 50% with conventional tests.

niPOC*	POC	CONVENTIONAL KARYOTYPING
Non-invasive Just needs a blood test	Invasive Generally requires curettage	Invasive Generally requires curettage
Informative results in >85%	Informative results in >85%	Informative results in approx. 50%
Approx. 15% non-informative results due to insufficient quantity or quality of DNA	Approx. 2% non-informative results due to insufficient quantity or quality of DNA	Approx. 30% non-informative results due to no culture growth
No maternal cell contamination (MCC)	Approx. 20% results with MCC, detectable with STRs	>20% MCC undetectable
Does not require culture	Does not require culture	Requires culture
TAT 3-7 working days	TAT 12 working days	TAT 3-4 weeks

*Own validation. Internal Igenomix data.

Why Igenomix?



Unbeatable experience

More than 10 years' experience performing genetic analysis on miscarriage tissue

More than 13,000 samples analysed



Own validation

Test performance metrics based on our own experience



Dual Algorithm

10% better diagnostic performance

Less false negatives

Offers better reproductive advice