

niPOC

Non-Invasive
Products of Conception

by Igenomix®

If you are experiencing
a miscarriage we can
provide valuable
information about the
possible cause

Igenomix®

PART OF VITROLIFE GROUP™



50%

of miscarriages in the first trimester of pregnancy are caused by chromosomal abnormalities.

In the event of a miscarriage, the niPOC test provides helpful information to assist you and your doctor.

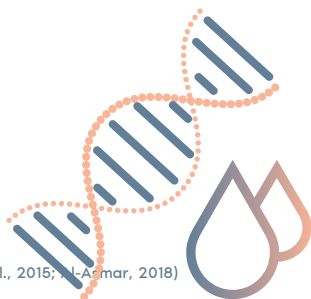
Miscarriages in the first trimester of pregnancy are relatively common. 50% of miscarriages are caused by chromosomal abnormalities. If you are undergoing assisted reproductive treatment, chromosomal abnormalities can be the cause of over 60% of miscarriages.*

Every cell of the human body contains 46 chromosomes arranged into 23 pairs. 23 chromosomes come from the sperm, and another 23 from the egg.

Missing or extra chromosomes (chromosomal Abnormalities) can result in miscarriage.

The **niPOC** is an advanced non-invasive test which uses a blood sample to determine whether a pregnancy loss was caused by a chromosome abnormality.

Based on the results, this information can help you and your doctor decide the best approach to ensure a successful pregnancy:



*(Martinez et al., 2010; Campos-Galindo et al., 2015; J. L. Azmar, 2018)

Why is niPOC better than the traditional methods?

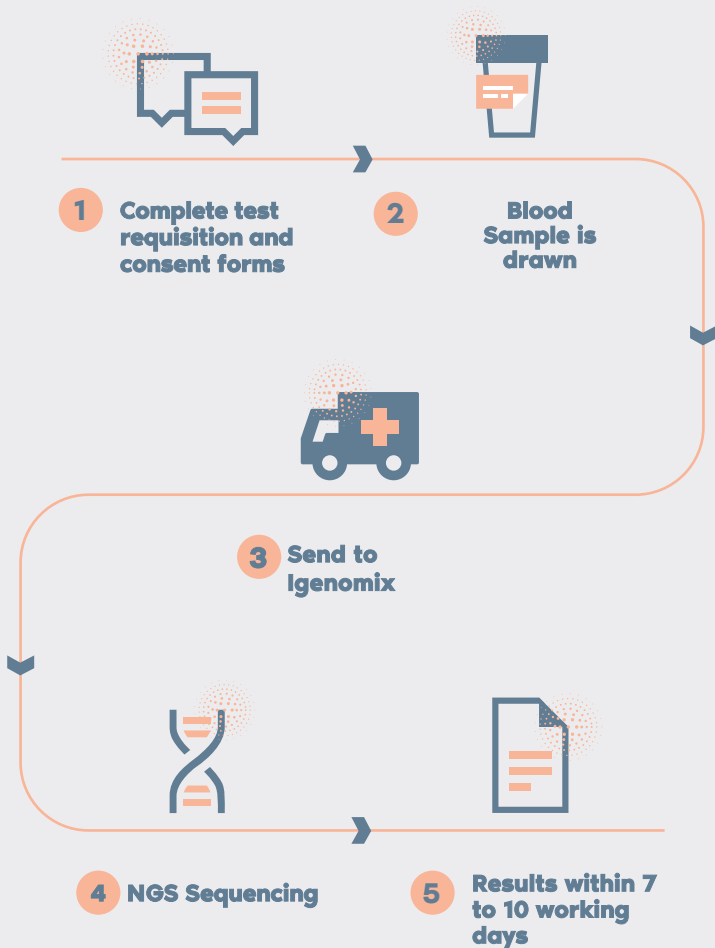
- **Non-invasive:** you don't have to undergo a D&C or collect fetal remains. A simple **blood sample is all that you needed**
- **Fast:** results available within 7 to 10 working days.
- **More Informative** Fetal results in more than 85% of samples, compared to only 50% with conventional tests.

How can niPOC help you?

- niPOC testing can help explain why miscarriage happened.
- Igenomix provides scientific resources and genetic counseling to help support you during this difficult time.

Test Procedure

Performing the niPOC test is simple, all you need is a maternal blood sample. However, it is important to do the test as soon as the miscarriage has been confirmed and always before any loss of blood or tissue begun.



The niPOC test **STEP by STEP**

1. Consult your doctor to find out if this test is for you.
2. Have a blood sample drawn.
3. Your sample will be sent to Igenomix laboratory.
4. Results will be sent your doctor within 7 to 10 working days from receipt of the sample.



**24
Hours**



**from 3
to 7 days**



Blood
Sample
taken

Samples arrives
to Igenomix

Results
delivered

800 50 342



info.me@igenomix.com

www.igenomix.net