

POC - INSTRUCTIONS

**Step 1:**
Contact us

Call +971 4 551 9465 or send an email to supportme@vitrolifegroup.com

Get more information about the POC test

- Request the test
- Request a pickup

**Step 2:**
Receipt of the Kit

Check the Kit and make sure that it includes the following:

- An EDTA tube* for the collection of maternal blood (check expiration date)
- A flask/container for the collection of foetal remains** (check expiration date)
- Biohazard Bag hold the blood tube and collection containers (check expiration date)
- Test Requisition Form and Consent Form
- Shipping bag (courier bag)
- You will also need sterile saline solution to wash the foetal remains/tissues, which is not included with the Kit

***Note:** If tubes for the collection of maternal blood are not included in the Kit, an EDTA tube of 5ml (purple top) may be used. In circumstances where maternal blood cannot be collected at the same time as the foetal tissue, please ensure that blood is collected within a week.

**10ml when maternal blood is collected using the tubes provided by Igenomix. Other tubes, please collect 4ml.

****Note:** Foetal remains could include any of the following:

- Empty gestational sac
- Deferred involuntary abortions
- Foetal remains passed spontaneously and collected at home
- Samples obtained after curettage (scraping) or embryohysterectomy
- Foetal sample remains of multiple gestations. In these cases it is essential to use separate kits for each foetus and take only one sample of maternal blood
- Samples collected at any time during pregnancy

Note: When possible, we recommend collecting the sample by curettage (scraping) or after embryohysterectomy.

**Step 3:**
Day of sample collection

Important guidance:

The following cases may lead to sample rejection:

- Samples not accompanied by their documentation (Test Requisition Form and Informed Consent)
- Sample documentation (Test Requisition Form and Informed Consent) has not been completed correctly
- Mandatory fields in sample documentation, identified on the forms with an asterisk (*), have not been completed
- Missing patient and/or clinician signature on the Test Requisition and Informed Consent

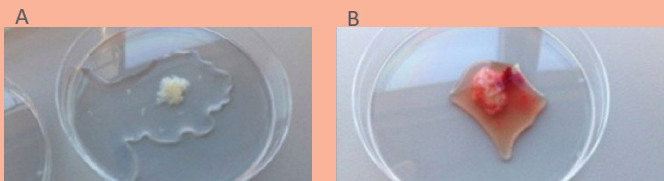
POC - INSTRUCTIONS

Tissue collection and blood draw:

- Take a tissue sample with a minimum size of 3x3 mm.
- A small, clean sample is preferred to a large, 'bloody' sample.
- Try to remove any large clots from the sample.
- Use a sterile saline solution (not included) to wash the tissues.
- The opposite picture should be used as a guide for sample collection. Note the appearance of the villi of the decidua in the clean tissue (A) and the appearance of the bloody sample (B) that is not suitable. In a clean sample, the decidua appear pink, dense and 'leaf-like'. When rinsed, villi tend to float and have a whiter, 'feathered' appearance compared with the decidua.
- Place the tissue in the provided container with sufficient saline solution to cover the sample. If a sample is taken using embryohysteroscopy, please place the tissue in a conical tube (10ml) with sterile saline solution (not included within the Kit).
- Seal all containers or tubes with parafilm tape or similar.
- Do not freeze the foetal remains after the sample is taken.
- Maternal blood (10ml)** may be collected in the EDTA tube (to prevent clotting) either before or after tissue collection. After blood draw, immediately mix the contents by inverting gently from 8 to 10 times.

**10ml when maternal blood is collected using the tubes provided by Igenomix. Other tubes, please collect 4ml.

In the event that a Kit is unavailable and a curettage is required, the foetal remains can be placed in a sterile universal container (frequently used for urine samples and available at pharmacies) and covered with sterile saline solution. Please properly seal the container before the shipping.



After tissue collection and blood draw:

- Label the tube with two unique identifiers (one of the following options):
 - Patient initials or Patient's full name and Date of Birth or
 - Patient initials or Patient's full name and Unique Patient ID

Incorrectly labelled or unlabelled samples may be rejected

- Place the container with the tissue sample and the EDTA maternal blood tube inside the Biohazard bag provided by Igenomix.
- Fold and place the Test Requisition & Consent form along with the biohazard bag inside the Igenomix Kit. Documents must be correctly completed and signed. Place the Kit inside the plastic (courier) return bag.



Step 4: Logistics

- Send the Kit at room temperature (do not freeze)
- We recommend that, where possible, samples are returned in the Kit provided by Igenomix.
- We recommend including a cold gelpack inside the Kit if outside temperatures exceed 35°C. Take care to avoid freezing the sample when adding the gelpack. For further details, please, contact our Customer Support department.
- When the shipment (foetal remains and blood) is scheduled within 24 hours of the tissue collection, store the foetal tissue container with sterile saline solution and the maternal blood tube at room temperature.
- When the shipment (foetal remains and blood) is not scheduled within 24 hours of the tissue collection, keep the samples in the fridge at 4-8°C until shipping.

POC - INSTRUCTIONS

**Step 5:**
Sample pick up

To ensure sample integrity is not compromised, which may lead to test failure, please adhere to the following hours of operation:

Pickups in UAE:

- From Monday to Friday.
- Contact us at least **24** hours before your preferred collection time to request a courier

Pickups outside UAE:

- Contact us and we will schedule the pick up according to your location.
- Contact us at least 24 hours before your preferred collection time to request a courier
- Ensure that the shipping bag (courier bag) includes Airway Bill, Commercial Invoice and Non-Declaration shipping documents that will be provided to you prior of the collection request.
- Holidays may cause service disruptions. In the event of any disruption, Igenomix will notify you of any changes that apply to the pickups.

We recommend that you ship the samples as soon as possible, in order to guarantee the quality of the sample.

**Step 6:**
Test results

The **clinician that has requested** the test will receive the results within **10 working days** from sample reception by Igenomix.

**Additional information**

For any questions or concerns and to request sample collection

 +971 4 551 9465

 supportme@vitrolifegroup.com